

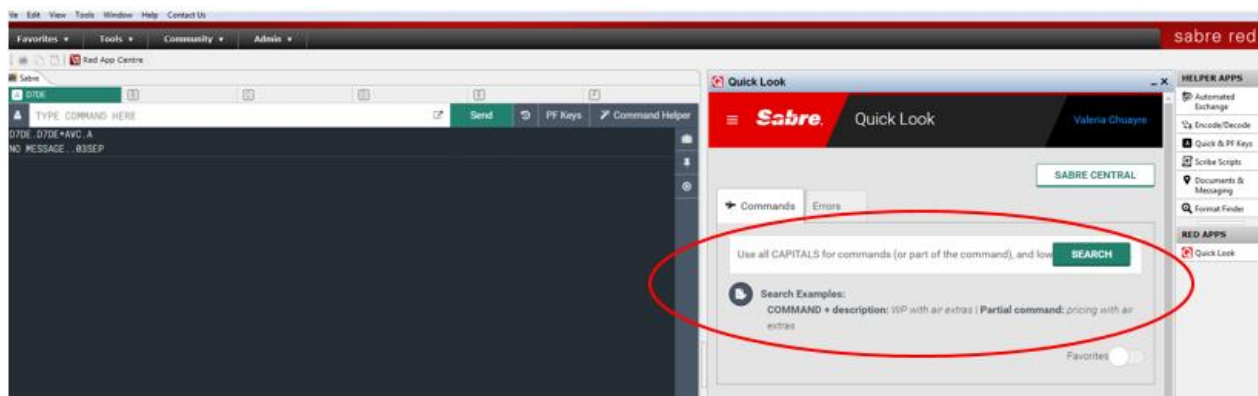
# Quick Look v.1.0 Release Notes

## Product Information

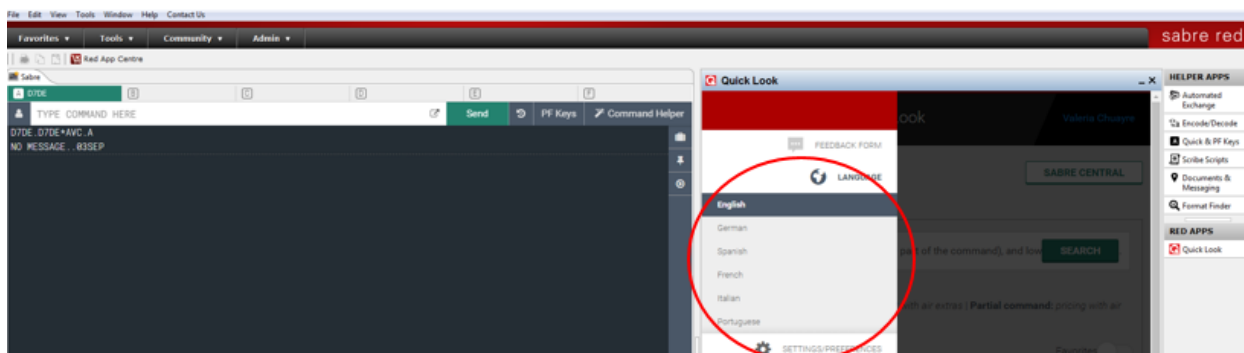
The Quick Look App has been developed and integrated within SR360 for full functionalities and includes several functionalities that aim to make users experience more easily while using the Sabre System commands.

The APP allows you to search for Sabre System commands and System Errors references, without leaving the Sabre screen. It offers a responsive design, for your convenience, so you can adjust it to your preferences.

- Command searches would need to be done in CAPITALS letters when including part of how the command starts and/or the commands' descriptions in lowercase. Both searches could be combined in case you remember part of a command and a specific function of it to be found within the descriptions.

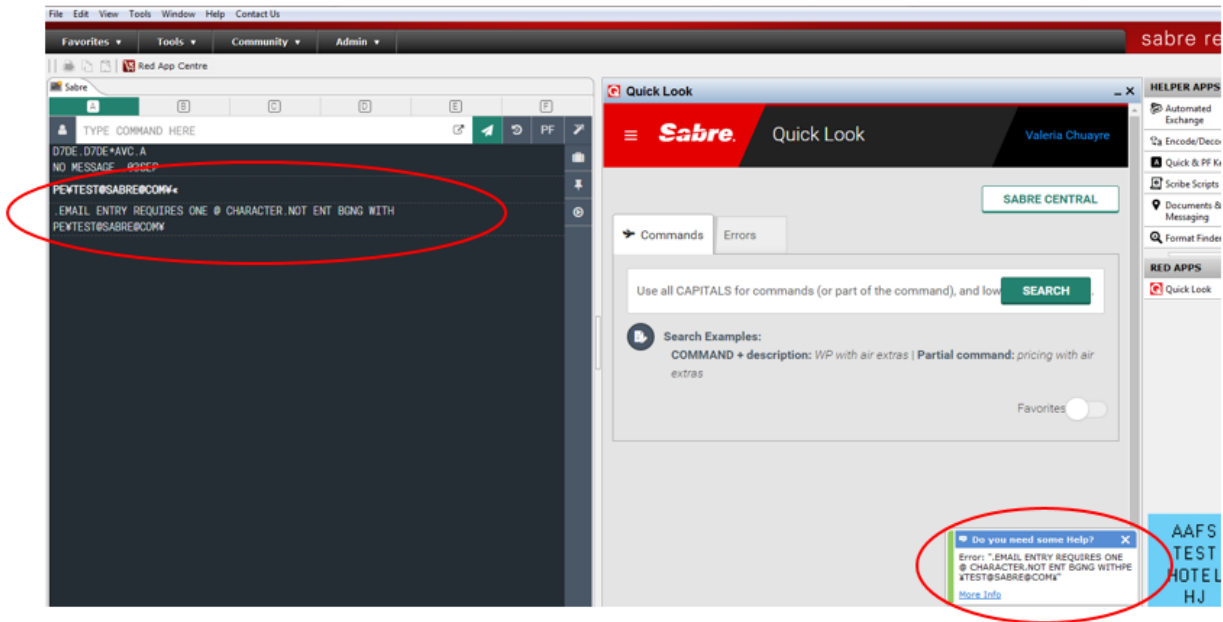


- Users have the option to switch the language and display the APP's menu and Command's content in the selected one.

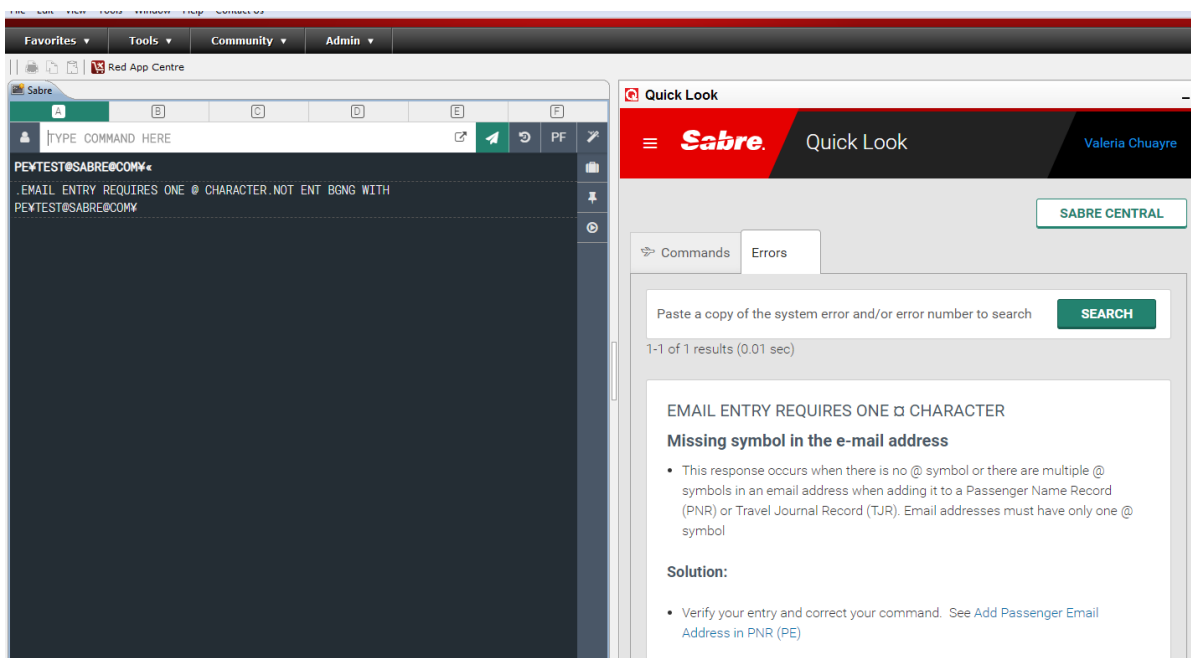


- Command references can be bookmarked and Personal notes could be added for future references
- The APP allows an option to access to Sabre Central site from it (Sabre Central button)

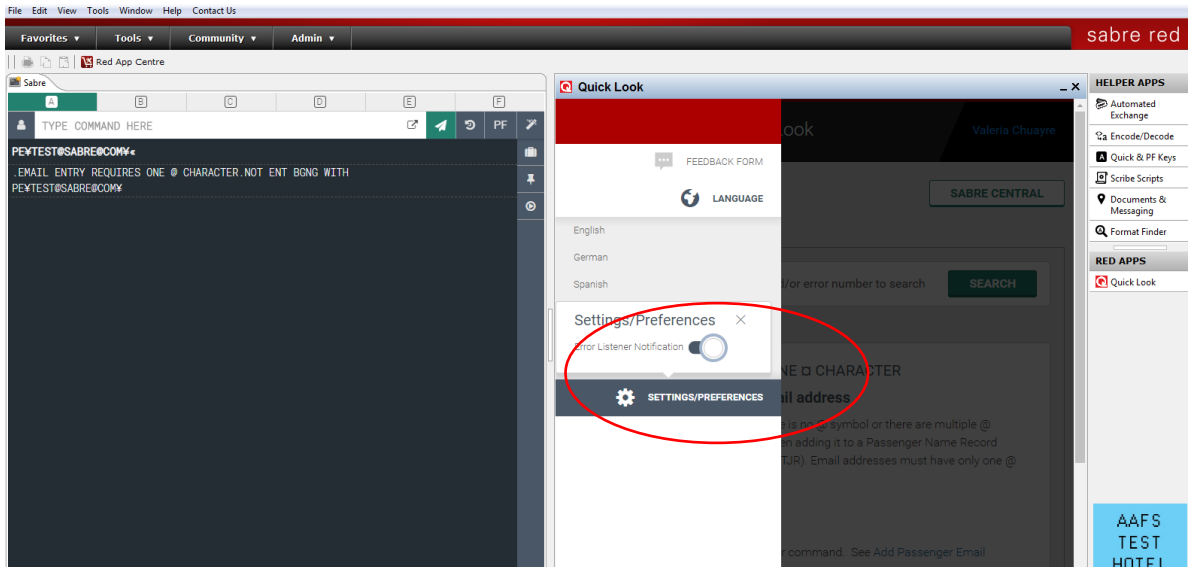
- Commands have a “Launch Finder” option to access to Finder’s references in case you need to get further information about the command, accessing to the full article reference
- Listener feature help has been developed to react to pre-defined system errors, to be pop-up once you get one of the listed errors, getting a direct link to the Error reference without the need of a manual search.



- Once you click on the “More Info” link, you are redirected to the Errors’ tab and automatically have the specific Error reference displayed for the necessary troubleshooting



- In case it is needed or preferred, listener feature can be disabled by updating the configuration within the Settings/Preferences



- An option to send Feedback about the Feature, Bookmarks, Notes and Search functionalities, could be found within the Feedback Form menu as shown below

