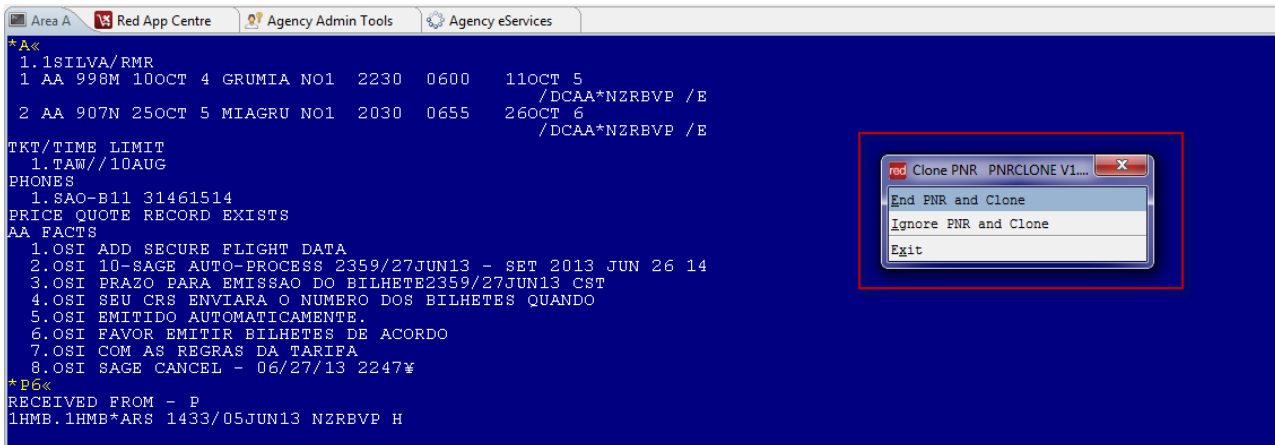


OVERVIEW

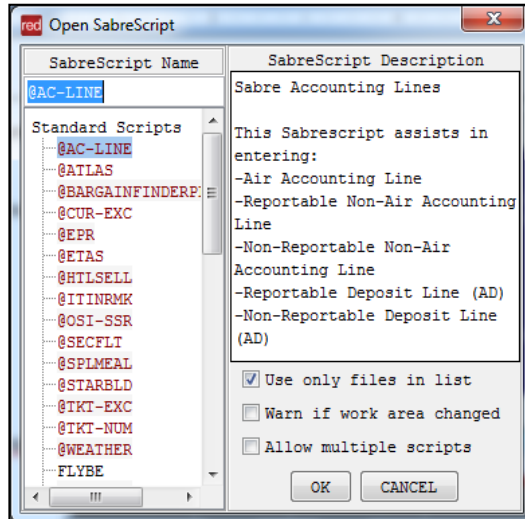
PNR Clone is a Red App that allows you to clone and assists you with optional features. You must have an active PNR in Sabre Red Workspace to proceed.



TASK**GRAPHIC**

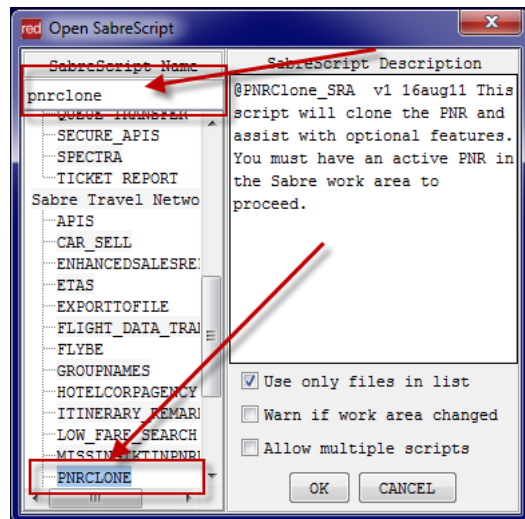
In order to use **PNR Clone**, follow these steps:

Press CTRL + A to open the SabreScript Window



Type the SabreScript Name or use the scroll down bar until you find the script name **PNRClone**.

Click **OK** to launch it.

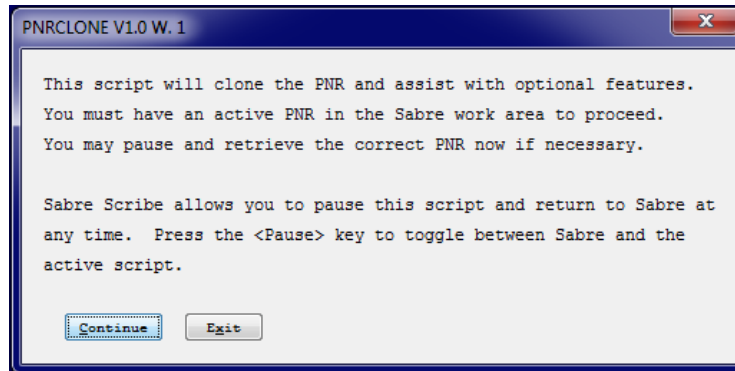


TASK

GRAPHIC

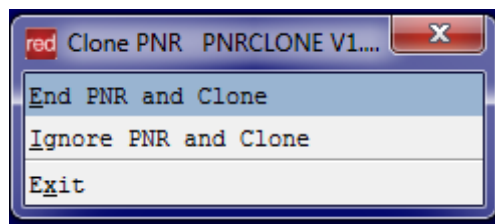
A warning window will pop up. Follow the instructions to continue.

Click on **Continue** to proceed or **Exit** to terminate the script.



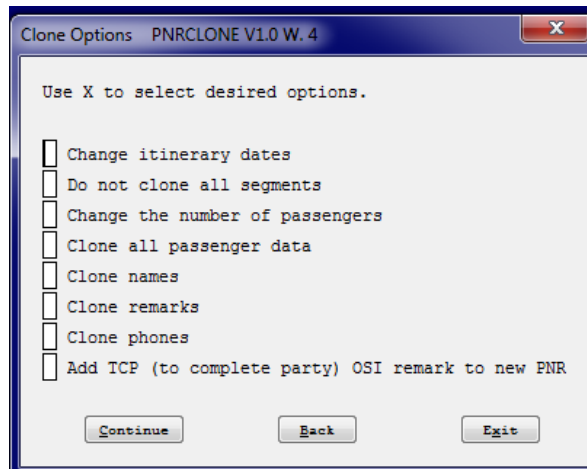
Choose one of the options in the Main Menu window to start the system.

Click on **Exit**, if you want to close the application.

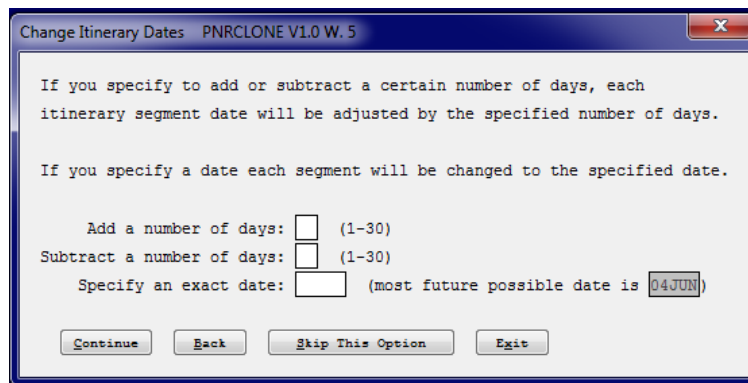


If you chose the option **End PNR and Clone**, a pop-up window will show up for you to choose the optional features. When finished selecting, click on **Continue** to proceed.

Click on **Exit**, if you want to terminate the application.



A similar screen like the example may appear. Fill it out with the required information and click on **Continue** when finished..



TASK

GRAPHIC

Choose one of the options: Insert the segment to be cloned or the type of service.

You can Skip it by clicking on the **Skip This Option** button.

Do Not Include All Segments PNRCLONE V1.0 W. 6

If you specify a segment select entry those segments will NOT be included in the new PNR.

If you specify a segment type all segments of that type will NOT be included in the new PNR.

Segment select entry: (1, 1/2, 1-3, etc.)

Segment type:

- A = AIR, ATX
- B = BUS
- C = CAR
- H = HIL, HHL, HHT
- II = Insurance
- L = LND
- M = MCO
- O = OTH
- P = PTA
- R = RAL
- T = TIO, TOR, TUR

Insert the number of passengers and click on **Continue** to proceed.

You can skip it, by clicking on the **Skip This Option** button.

Click on **Exit** to terminate the app.

Change the Number of Passengers PNRCLONE V1.0 W. 7

Number of passengers for the new PNR

See an example of a cloned PNR.. In this example, only the segments were cloned.

```
Area A Red App Centre Agency Admin Tools Agency eServices
BCB1<OK 1315 NZRBVP
NO NAMES
1 AA 906Y 10NOV 7 GRUMIA SS1 2330 0455 11NOV 1 /DCAA /E
2 AA 907Y 25NOV 1 MIAGRU SS1 1945 0705 26NOV 2 /DCAA /E
1HMB.1HMB*AR8 1315/06JUL13
```

If you want to clone names, the system will display a screen where you must inform the name you want to clone, base on their name field number.

When finished, click on the **Continue** button.

Clone Passenger Names PNRCLONE V1.0 W. 8

You may clone all the names in the original PNR. To do this just leave the entry box blank.

You may clone a single name or all the names in a surname group.

Example name field: 1.2SMITH/BOB/CAROL 2.2JONES/TED/ALICE

Example entries: 1 clones both Bob and Carol Smith
2 clones both Ted and Alice Jones
1.2 clones only Carol Smith
2.1 clones only Ted Jones

If not all, enter the name number to clone

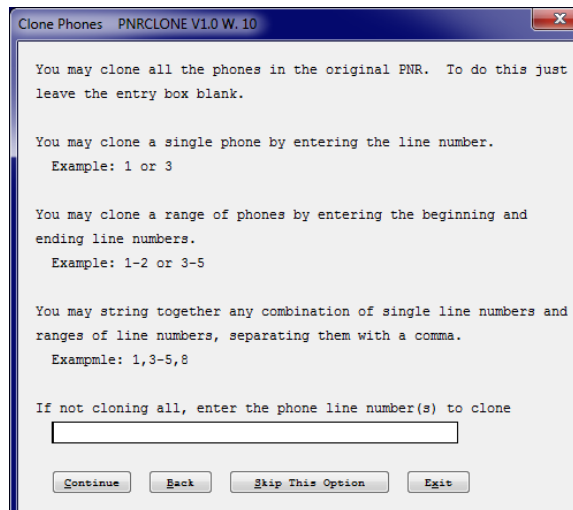
TASK

GRAPHIC

If you want to clone the phone field, insert the phone line number and click on the **Continue** button to proceed.

You can skip this action, by clicking on **Skip This Option** button.

Click on **Exit**, if you want to close the application.



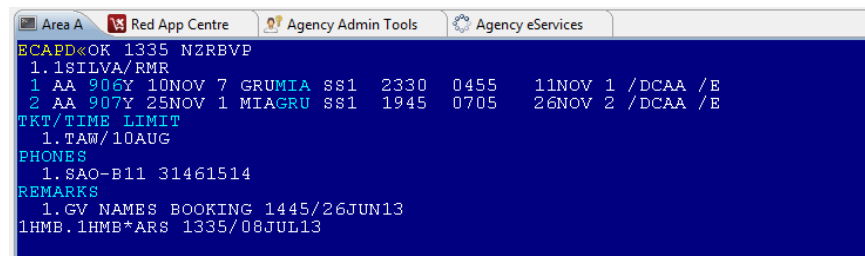
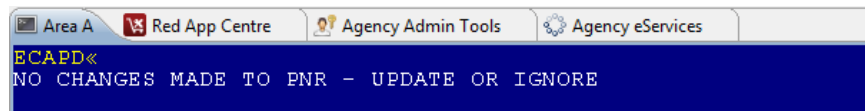
Should you receive an error message like this:

NO CHANGES MADE TO PNE - UPDATE OR IGNOR.

It needs the Received Field. Include it by typing: 6Agent or Passenger Name and then run the script again.

Example of cloned PNR.

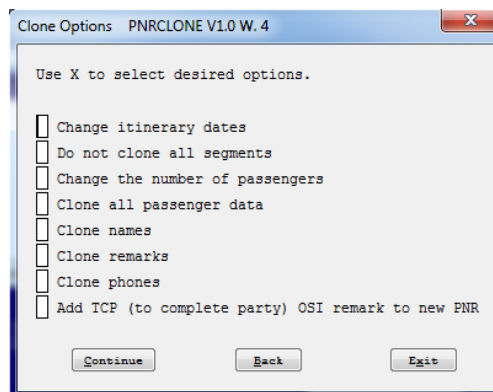
Finalize the PNR, including the Received field and then **End transaction**.



If you choose Ignore **PNR and Clone**, the system will display the following screen.

Finalize the PNR, including the Received field and then **End transaction**.

Just follow the procedures as mentioned in previous pages.



TASK

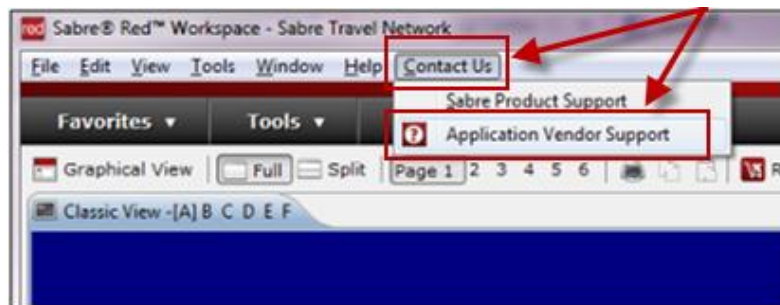
GRAPHIC

How to validate if a Red App is already installed in my Sabre Red Workspace?

To validate that the user received the application before restarting Sabre Red Workspace, click Help and then History of Updates to look for Red Apps with a Status of Not Yet Activated.

Name	Version	Date	Status
Sabre Red Workspace_3YAB_3333 (Pr...	2.0.0.0000000007	Sep 20, 2012 5:08:29 PM	NOT YET ACTIVATED
Air Routing Mileage Calc	1.0.0.201201161659	Sep 20, 2012 5:08:29 PM	NOT YET ACTIVATED
Calculator	1.0.0.201112201654	Sep 20, 2012 5:08:29 PM	NOT YET ACTIVATED

1. After restarting Sabre Red Workspace, you can also look under **Contact Us – Application Vendor Support** to validate that the application installed successfully.



2. The system will open a new window with all the Red Apps installed.

Should you need to contact the Red App Vendor for support, click on the Red App name to open the **Contact Details**.

