

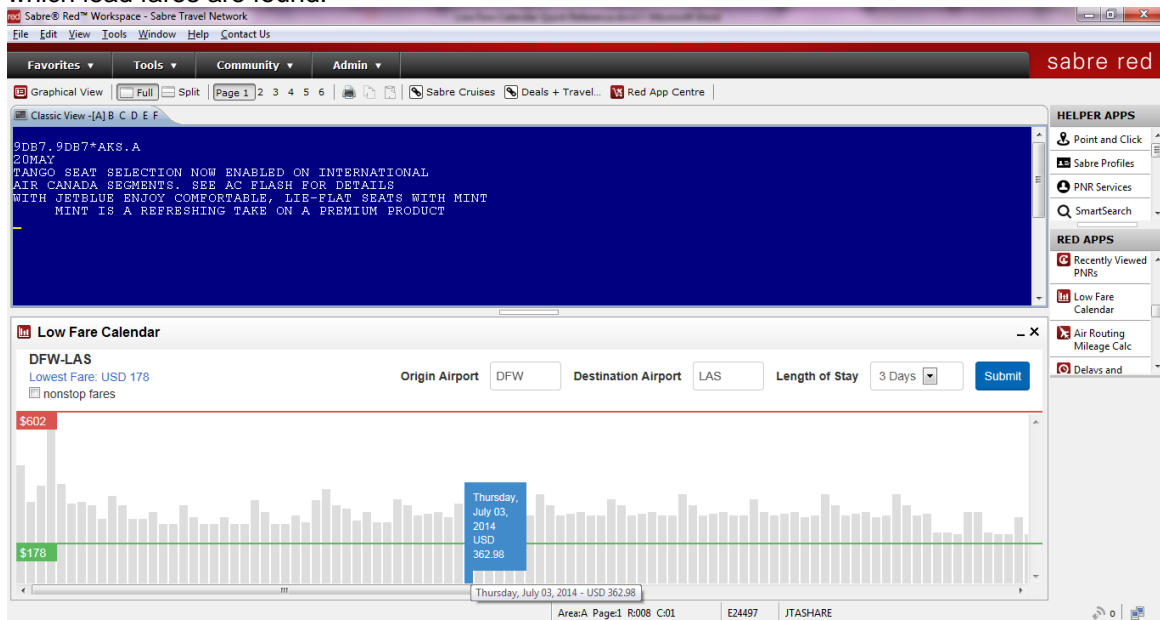
## OVERVIEW

Low Fare Calendar Red App allows users of Sabre Red Workspace to quickly view the lowest round-trip fares for the desired length of stay for each departure date during the next six months. With this app, you no longer have to search day by day for cheap flight options. Simply launch the app, enter the origin, destination and desired length of stay and let it do the work for you. Whether your agency is focused on corporate or leisure, you are sure to impress your clients with this *Red App*.

This app is currently available for use with a broad range of U.S. origin cities for both domestic and international itineraries, with additional points of sale to be added in the coming months. Please review city pair [Supported Markets](#) section for more information.

## HOW TO:

1. Launch the Low Fare Calendar Red App from the Red App Side Bar Panel.
2. Enter a supported Origin and Destination Airport Code in the Red App View and select length of stay.
3. Low Fare Calendar Red App will display for each of the next 192 consecutive calendar days for which lead fares are found.



4. By clicking on a specific date on the displayed results, Low Fare Calendar will send a JR Low Fare Search command to Sabre Classic View.  
*Note: For more information on Low Fare Search command please see **prifo010** in Format Finder.*
5. Non Stop fares can also be filtered by clicking on the Top Left checkbox filter option.

---

## **SUPPORTED MARKETS**

---

Here you will find the domestic and international city pairs that are supported by the Low Fare Calendar Red App. We are continuing to expand the list so check back soon for updates.

[Download link of Supported City Pairs](#)