

Enhanced Sales Report



Quick Reference

OVERVIEW

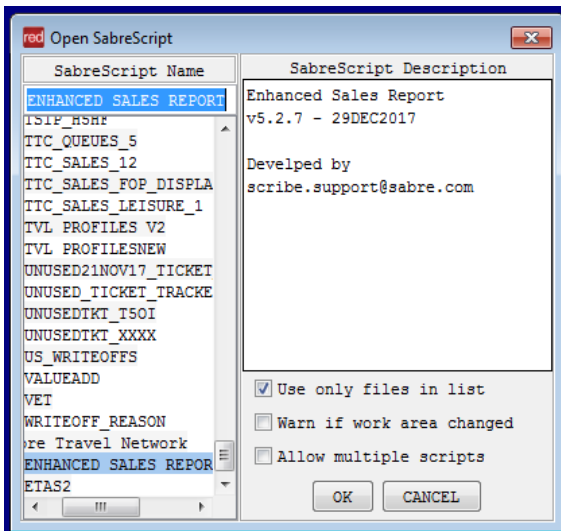
Enhance Sales Report is a Red App that allows agents to scan daily sales report for single day or multiple days and export the data to a CSV file.

BENEFITS

- Access the daily report on sales per day or days.
- Data is automatically exported into an Excel file.
- Customize each report by selecting the columns, on to Result File.
- Multiple types of reports: DQB, DQB RF, DQB EMD, DQB RFEMD and all option at the same time.
- Multiple PCCs running option. Option for Direct Ticketing qualifiers: TAT, TCH, KIL, STA
- Option for just one specific agent sign on the report.
- Option for just one specific Airline Code on the report.

In order to use **Enhanced Sales Report** application, follow these steps:

- 1- Do CTRL + A to open Sabre Script and look for the Enhanced Sales Report, under the bottom, where all Red Apps are.



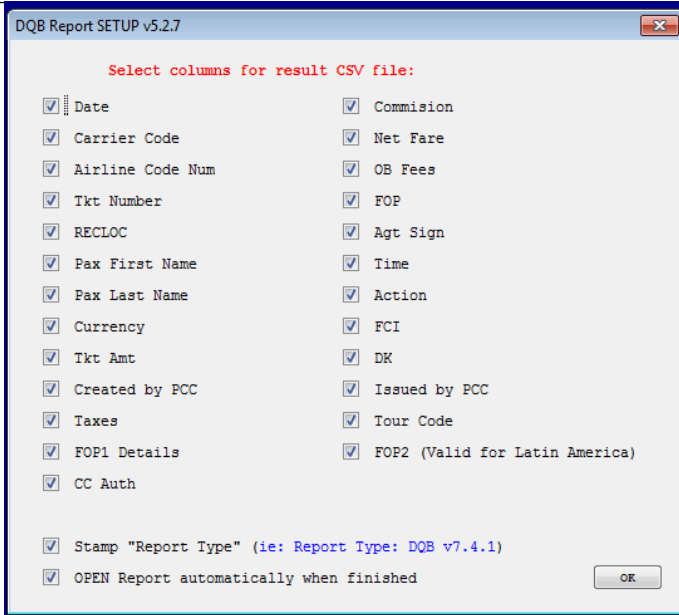
NOTE: The very first time you run the Script, you will get into the configuration window setup, where you can specify all the different columns you want on the result CSV file.

On this setup file, you can also configure to open automatically the report once the Script is done.

You can return to the configuration file at any time, by clicking on the "Setup" button, next to Result File.

TASK

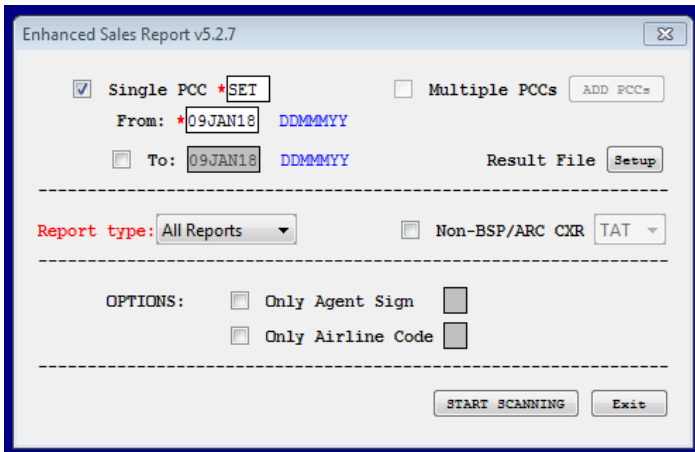
GRAPHIC



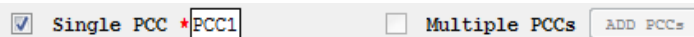
2- On the main window, fill in the information needed on the sales report.

Fill in the mandatory fields: PCC and Date. You can scan one PCC or multiples PCC at the same time, just follow the instructions on the "Add PCCs" button.

Main window:

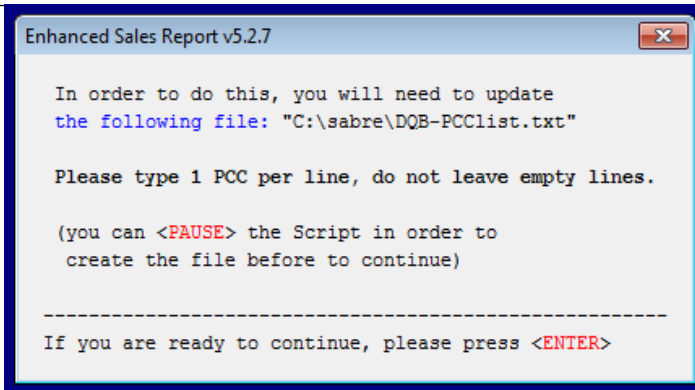


In this part you can specify to run the report in a single PCC or in multiple PCCs.



If you press "ADD PCCs", you will get the following window:

TASK**GRAPHIC**



By following those options you can run the Script in multiple PCCs.

- 3- Right below the PCC, you need to specify a date or a range of dates to run the report.

From: *09JAN18 DMMYY
 To: 09JAN18 DMMYY

Below you can specify the report type you need: DQB, DQB RF, DQB EMD, DQB RFEMD or All report together. You can also select Sabre Direct Ticketing: TAT, TCH, KIL and STA.

Report type: DQB Non-BSP/ARC CXR TAT

- 4- Finally, if you wish to only report a specific agent sign, or only one airline code, you can specify that here:

OPTIONS: Only Agent Sign
 Only Airline Code

File is saved in **C: /Sabre/DQB** folder.