
OVERVIEW

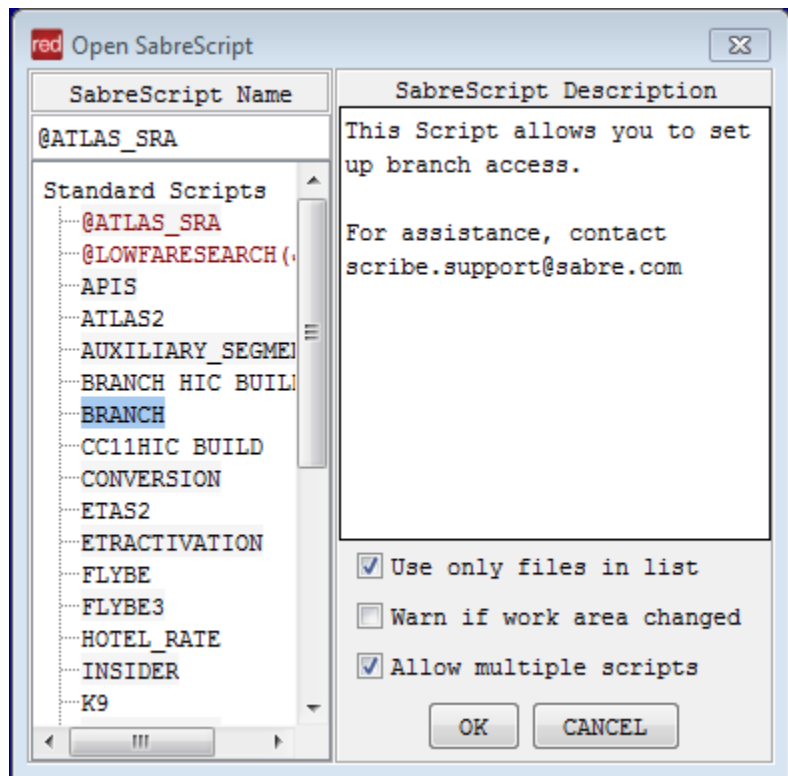
Branch is a Sabre Red App that allows agents working from a Home/Main/Parent PCC to set up branch access on behalf of a PCC for whom they have Branch and AAA rights. If a list of PCCs is to be used, it can also be done using a file of related PCCs that can be retrieved from eServices.

In order to make Branch Access entries between PCCs, the requesting PCC must have Branch and AAA established with the PCCs they are updating. *Please note: The keyword ACCESS and Duty Code 9 are required.

In order to use **Branch**, follow these steps:

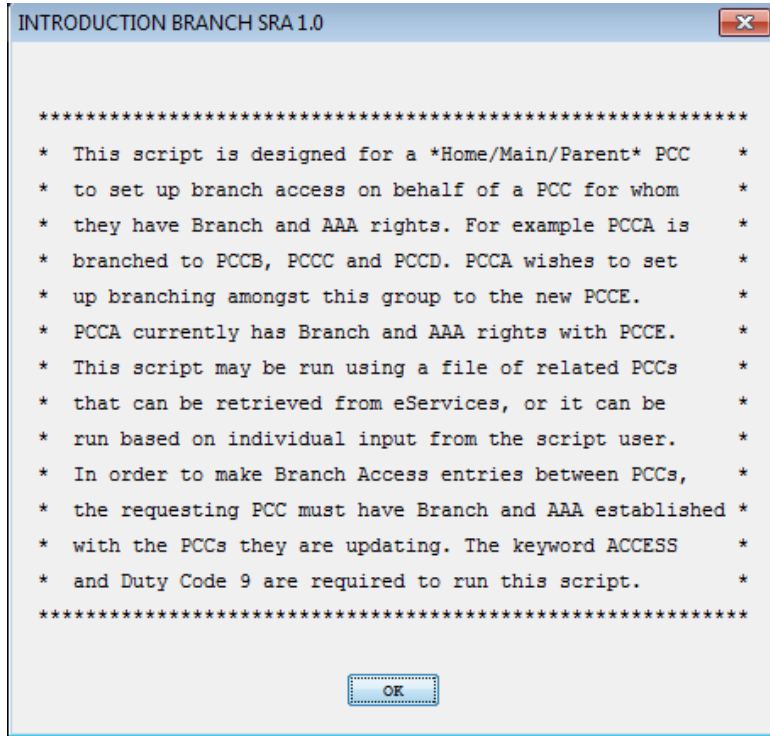
Press CTRL+ A to open the SabreScript Window

Click **OK** or hit Enter to continue

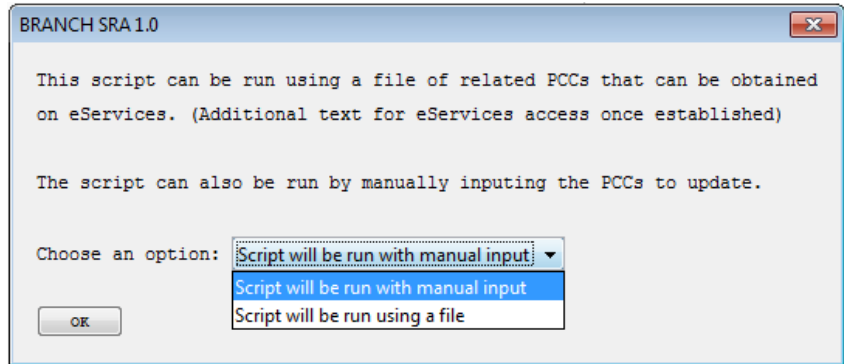


The following message will appear

Click **OK** or hit Enter to continue



The following window will appear.
Click on the dropdown menu, and choose one of the 2 options.
The first one will allow you to manually input PCCs.
The second one will allow you use a file with a list of PCCs.

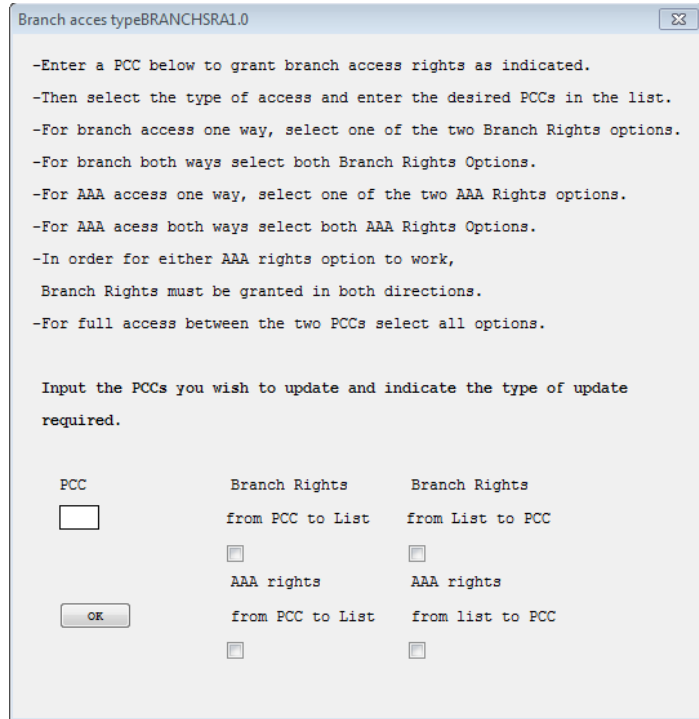


Manual Input:

If manual input is selected, the following screen appears

Explanation of each field is given in the window. Input the desired PCC and click on the boxes with the applicable action.

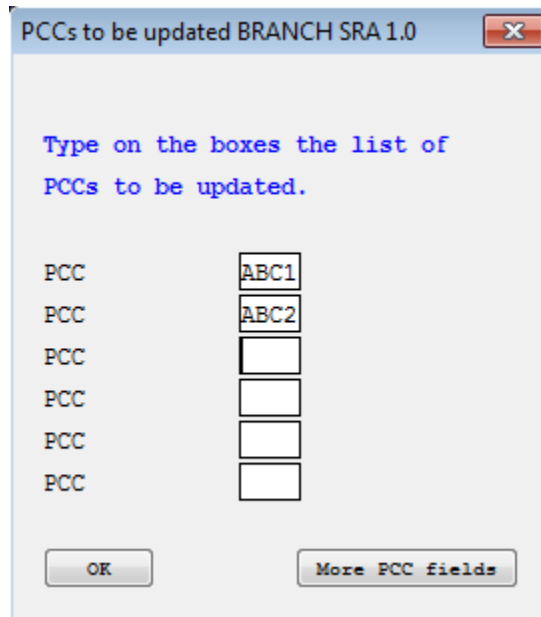
Click **OK** or hit Enter to continue



A list of boxes to add the PCCs to which branch access will be granted appears. As many as needed can be filled, and a button with more fields is provided.

Click **OK** or hit Enter to continue

Branch access will be granted after this.



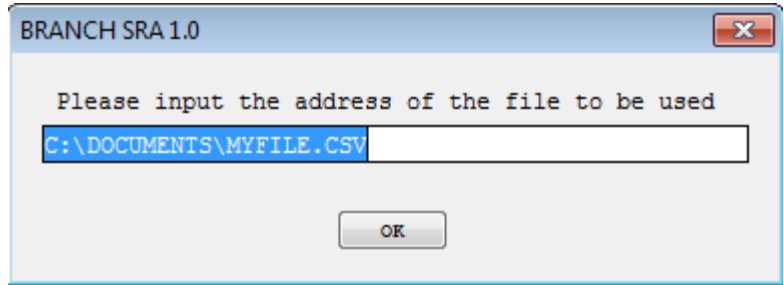
TASK

GRAPHIC

Using a File:

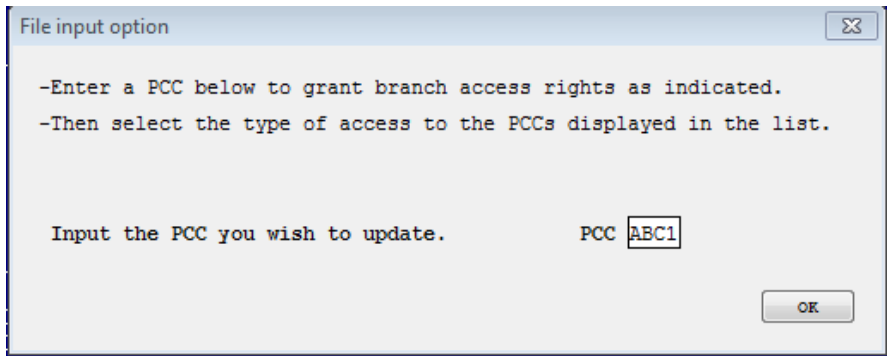
If using a file option is selected, the path to the file is to be specified in the following box.

Click **OK** or hit Enter to continue



Input the PCC to grant branch access.

Click **OK** or hit Enter to continue



The following window will display with the list of PCCs from the file. The kind of access to be granted to each should be selected by checking the corresponding box.

Click **OK** or hit Enter to continue

Branch access will be granted after this.

