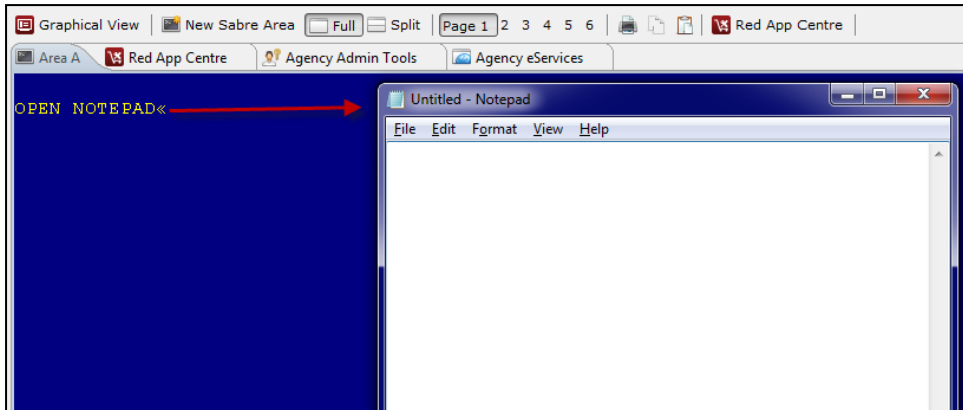

OVERVIEW

App Launch is a Red App that allows users to define which agency applications they want to launch from within the Sabre Red Workspace Classic View by typing a command line "OPEN" followed by the name of your configured agency application.



BENEFITS

- User can define which applications they want to open from within Sabre Red Workspace
- Simple command line – just type OPEN followed by the application name

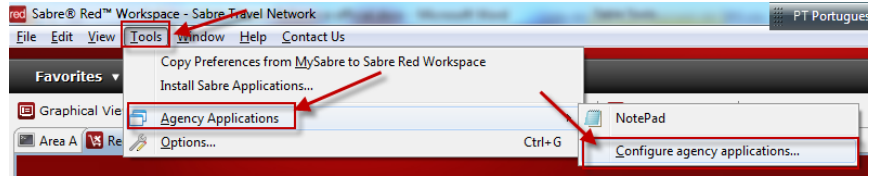
TASK

GRAPHIC

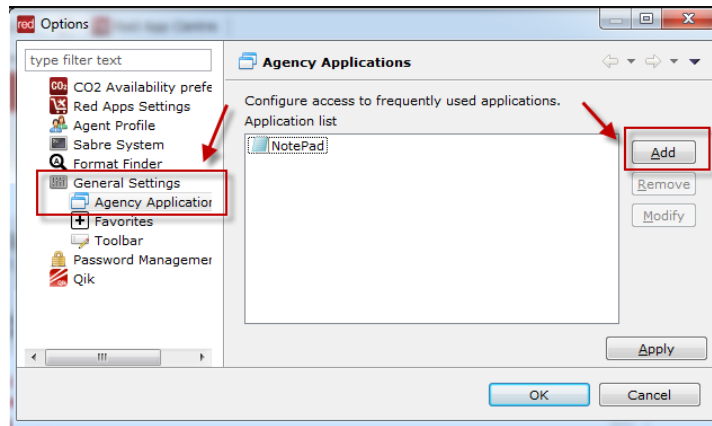
In order to use **App Launch**, user just needs to follow these steps:

Configure the applications you want to open from within Sabre Red Workspace Classic View.

Click on Tools > Agency Applications> Configure agency applications

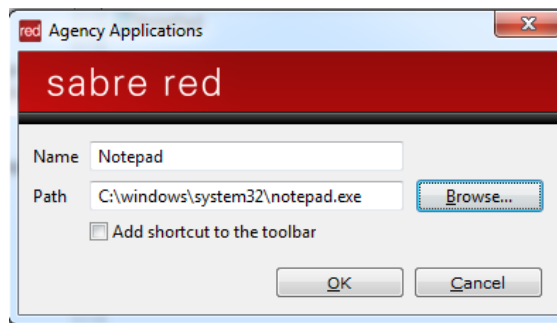


Inside Agency Applications, click on **ADD** button to choose the application.

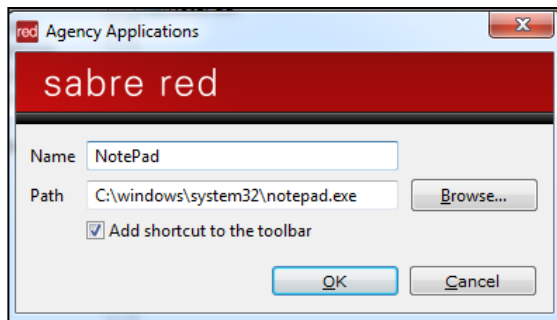


Type the application name and its path. Use the Browse button, if you need to find the correct path.

When finished, click **OK**.



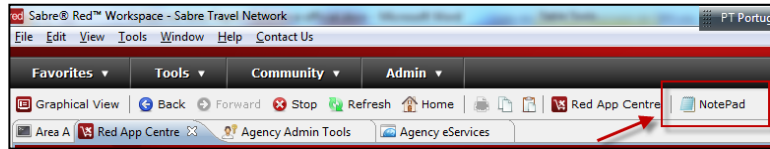
If you click on **Add shortcut to the toolbar**, the application icon will be include in the Sabre Red Workspace toolbar.



TASK

GRAPHIC

The icon was included in the tool bar.

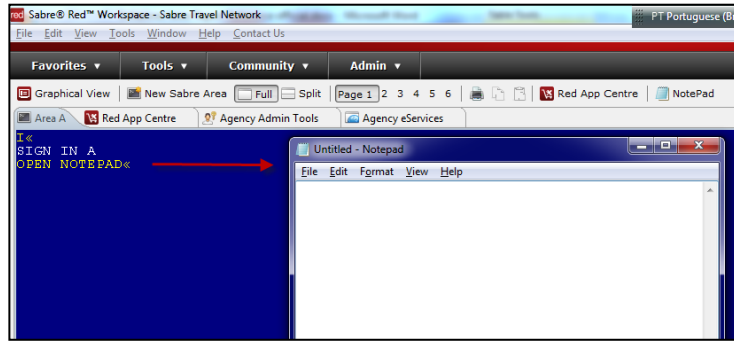


To run the application from within Sabre Red Workspace Classic View.

Type the command line **OPEN** followed by the application name. For example:

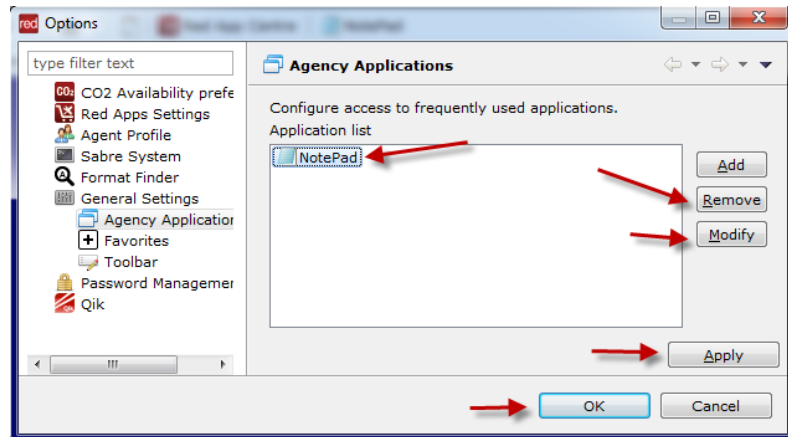
>OPEN NOTEPAD

Remarks: This application works even if you are not signed in.



To **Remove** or **Modify** the application, click on the application and choose the appropriate action.

Click on **Apply** then **OK**, when finished.



TASK

GRAPHIC

How to validate if a Red App is already installed in my Sabre Red Workspace?

To validate that the user received the application before restarting Sabre Red Workspace, click Help and then History of Updates to look for Red Apps with a Status of Not Yet Activated.

Name	Version	Date	Status
Sabre Red Workspace_3YAB_3333 (Pr...	2.0.0.0000000007	Sep 20, 2012 5:08:29 PM	NOT YET ACTIVATED
Air Routing Mileage Calc	1.0.0.201201161659	Sep 20, 2012 5:08:29 PM	NOT YET ACTIVATED
Calculator	1.0.0.201112201654	Sep 20, 2012 5:08:29 PM	NOT YET ACTIVATED

1. After restarting Sabre Red Workspace, you can also look under **Contact Us – Application Vendor Support** to validate that the application installed successfully.



2. The system will open a new window with all the Red Apps installed.

Should you need to contact the Red App Vendor for support, click on the Red App name to open the **Contact Details**.

