

# Air Routing Mileage Calculation

## OVERVIEW

**Air Routing Mileage Calculation** is a Red App that allows agents to compute air routing mileage between two airports with a graphical map display representation. The mileage is based on the air routing from origin to destination as obtained from IATA.

The screenshot displays the 'Air Routing Mileage Calc' application window. At the top, the title bar reads 'Air Routing Mileage Calc' with a close button. Below the title bar, there are two input fields: 'From:' containing 'GRU - Sao Paulo, SP Brazil (Guarulhos Intl)' and 'To:' containing 'MAD - Madrid, Spain (Barajas)'. To the right of these fields are 'Search' and 'Clear' buttons. Below the input fields, the following text is displayed: 'Ticketed point mileage:5211 / IATA.', 'Cumulative ticketed mileage:5211.', and 'Maximum permitted mileage:6253.'. The main area of the application is a map showing the flight route. The route is a straight line connecting a purple dot in South America (Sao Paulo) to another purple dot in Europe (Madrid). The map includes labels for continents (NORTH AMERICA, SOUTH AMERICA, EUROPE, AFRICA, ASIA, AUSTRALIA), oceans (North Atlantic Ocean, South Atlantic Ocean, Indian Ocean, Pacific Ocean), and geographical features like the TROPIC OF CANCER, EQUATOR, TROPIC OF CAPRICORN, Amazon Basin, Sahara, Arabian Peninsula, Congo Basin, Gobi, and Indonesia. A scale bar at the bottom left shows 1000 miles and 2000 kilometers. The bottom right corner of the map area contains the text '©2013 MapQuest | Terms'.

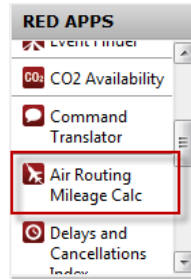
---

**TASK****GRAPHIC**

---

To use **Air Routing Mileage Calculation**, follow these steps:

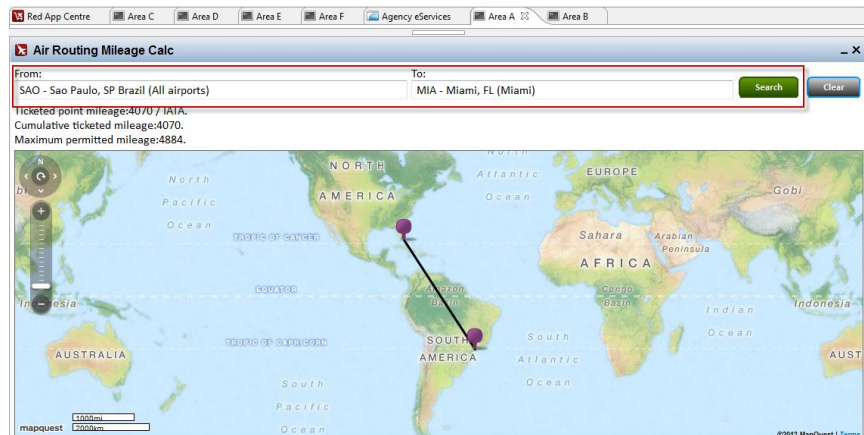
Access the app from the Sabre Red Workspace Application **Side Bar menu**.



Insert the city or airport code you would like to have the mileage calculated for.

Click **Search** to proceed.

If you want to calculate another route, click on **Clear Button** and insert the city/airport codes again.



The data information shown is based on the IATA air routing mileage policy.

**Ticketed point mileage:4070 / IATA.**  
**Cumulative ticketed mileage:4070.**  
**Maximum permitted mileage:4884.**

## TASK

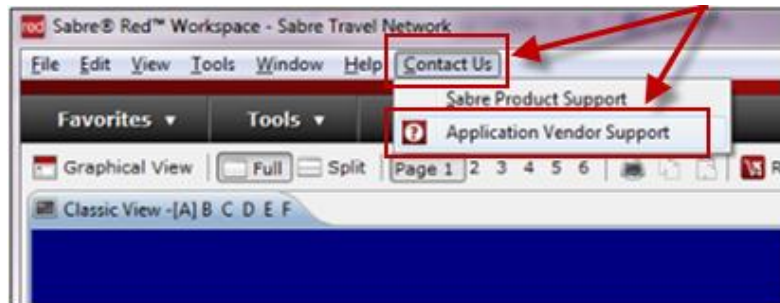
## GRAPHIC

How to validate if a Red App is already installed in my Sabre Red Workspace?

To validate that the user received the application before restarting Sabre Red Workspace, click Help and then History of Updates to look for Red Apps with a Status of Not Yet Activated.

Name	Version	Date	Status
Sabre Red Workspace_3YAB_3333 (Pr...	2.0.0.0000000007	Sep 20, 2012 5:08:29 PM	NOT YET ACTIVATED
Air Routing Mileage Calc	1.0.0.201201161659	Sep 20, 2012 5:08:29 PM	NOT YET ACTIVATED
Calculator	1.0.0.201112201654	Sep 20, 2012 5:08:29 PM	NOT YET ACTIVATED

1. After restarting Sabre Red Workspace, you can also look under **Contact Us – Application Vendor Support** to validate that the application installed successfully.



2. The system will open a new window with all the Red Apps installed.

Should you need to contact the Red App Vendor for support, click on the Red App name to open the **Contact Details**.

